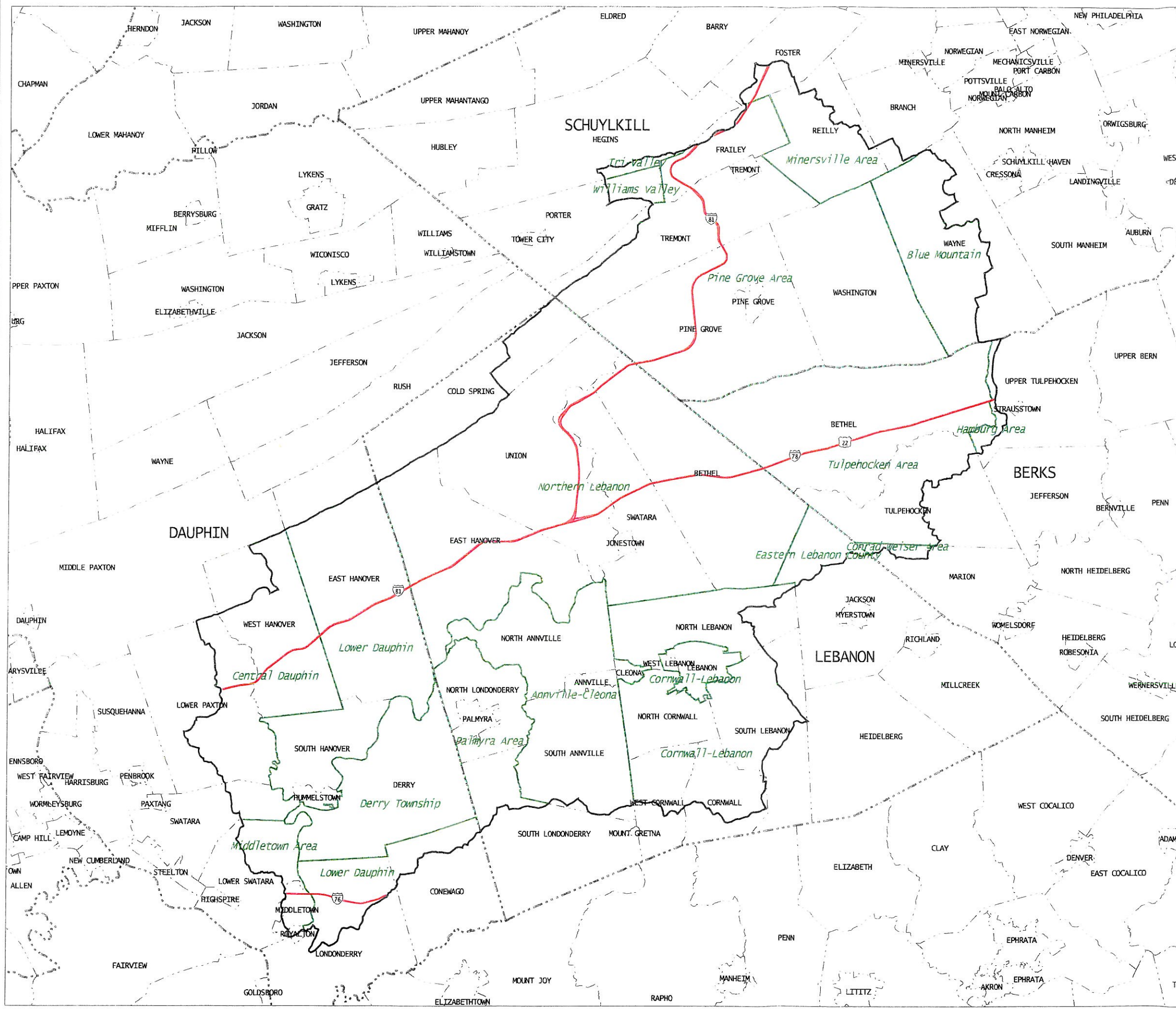


Figure 2-1

# SWATARA CREEK River Conservation Plan

prepared for the  
Swatara Creek Watershed Association  
September, 2000



## School Districts

School District Boundary

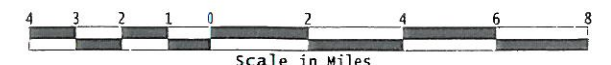
## Other Features

Swatara Creek Watershed

Interstate Highway

Municipal Boundary

County Boundary



Scale = 1 : 253,440  
1 Inch = 4 Miles (approx.)

## SOURCES:

Pennsylvania Department of Environmental Protection  
Pennsylvania Department of Transportation  
Susquehanna River Basin Commission



Figure 2-1 -- School Districts

Figure 2-2





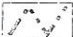
# SWATARA CREEK River Conservation Plan

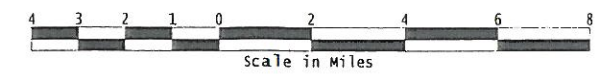
prepared for the  
Swatara Creek Watershed Association  
September, 2000

## Land Use / Land Cover (Anderson Level 1)

-  Urban/Built-up
-  Agricultural
-  Forest
-  Wetland
-  Barren
-  Water
-  Other

## Other Features

-  Swatara Creek Watershed
-  River / Stream
-  Interstate Highway
-  Municipal Boundary
-  County Boundary



Scale = 1 : 253,440  
1 Inch = 4 Miles (approx.)

SOURCES:  
U.S. Environmental Protection Agency/  
Geographic Information Retrieval & Analysis System  
(EPA/GIRAS)  
Pennsylvania Department of Transportation  
Susquehanna River Basin Commission

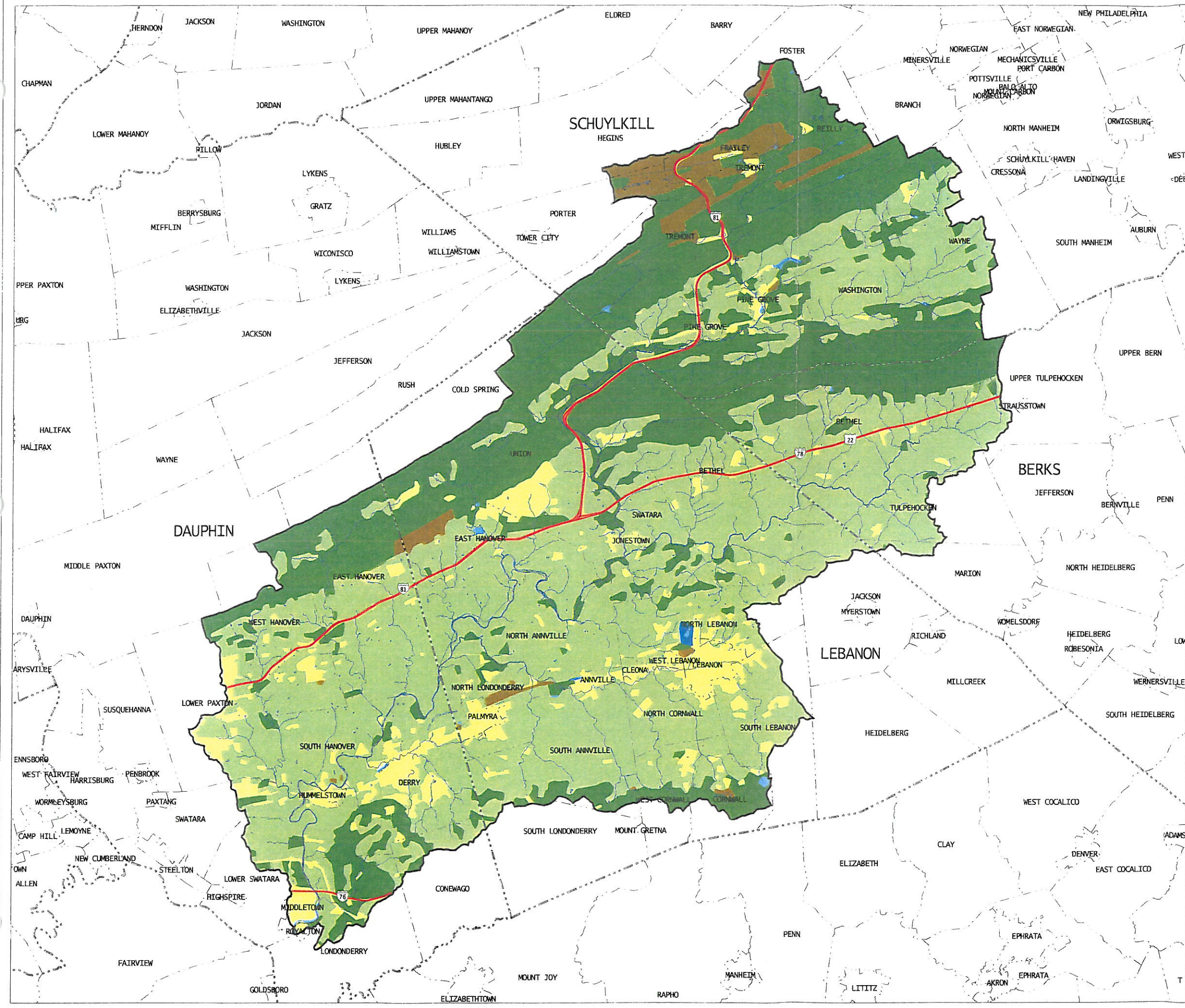


Figure 2-2 --- Land Cover

Figure 2-3



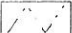

# SWATARA CREEK River Conservation Plan

prepared for the  
Swatara Creek Watershed Association  
September, 2000

## Zoning

-  Residential
-  Commercial
-  Agricultural
-  Mining (Earth Excavation)
-  Manufacturing / Industrial
-  Conservation
-  Service / Public Facility
-  No Zoning or No Data

## Other Features

-  Swatara Creek Watershed
-  Interstate Highway
-  Municipal Boundary
-  County Boundary



Scale = 1 : 253,440  
1 Inch = 4 Miles (approx.)

## SOURCES:

Municipalities in the  
Swatara Creek Watershed  
Pennsylvania Department of Transportation  
Susquehanna River Basin Commission

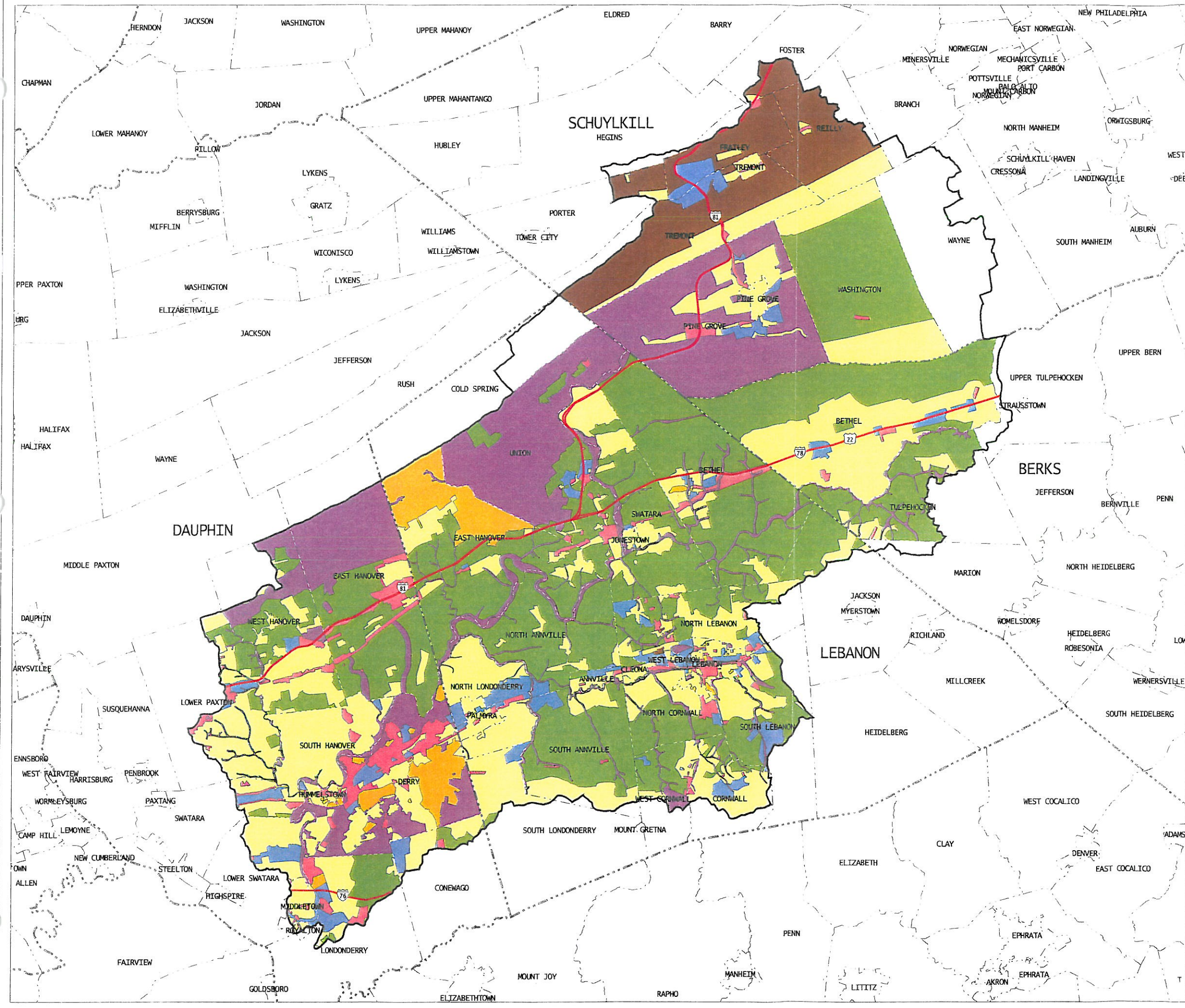


Figure 2-3 --- Zoning

Figure 2-4


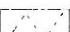

# SWATARA CREEK River Conservation Plan

prepared for the  
Swatara Creek Watershed Association  
September, 2000

## Transportation Features

-  Interstate Highway
-  State Highway / State Route
-  Local Road
-  Railroad
-  Union Canal
-  Aqueduct
-  Appalachian Trail
-  Horseshoe Trail
-  Airport / Heliport

## Other Features

-  Swatara Creek Watershed
-  Municipal Boundary
-  County Boundary



Scale = 1 : 253,440  
1 Inch = 4 Miles (approx.)

### SOURCES:

Municipalities in the  
Swatara Creek Watershed  
Pennsylvania Department of Transportation  
Susquehanna River Basin Commission

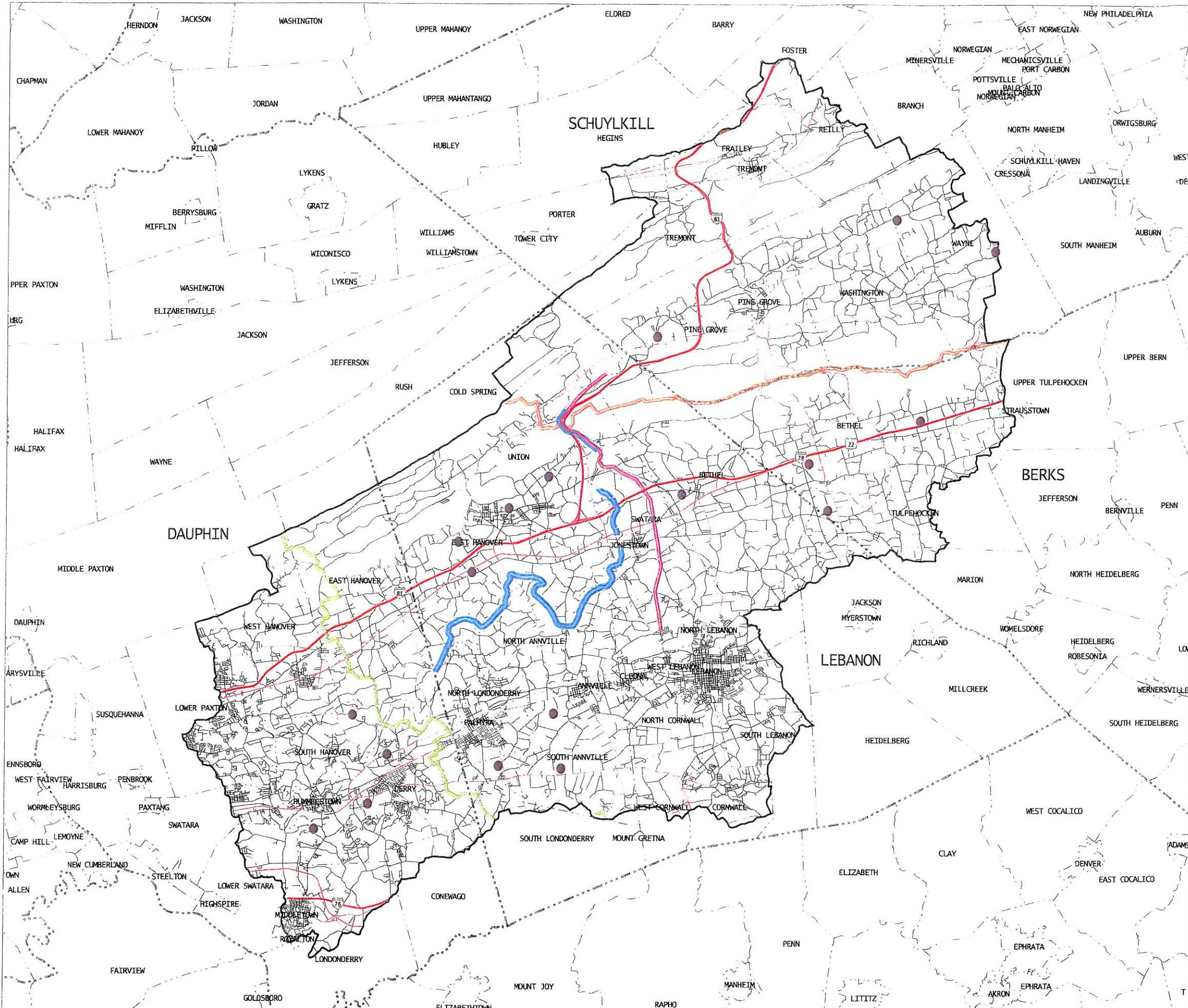


Figure 2-4 -- Transportation Features

Figure 3-1



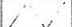

# SWATARA CREEK River Conservation Plan

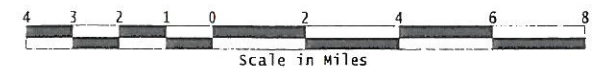
prepared for the  
Swatara Creek Watershed Association  
September, 2000

## Public / Private Lands

-  State Forest
-  State Park
-  State Gameland
-  Fort Indiantown Gap Military Reservation

## Other Features

-  Swatara Creek Watershed
-  Interstate Highway
-  Municipal Boundary
-  County Boundary



Scale = 1 : 253,440  
1 Inch = 4 Miles (approx.)

### SOURCES:

Pennsylvania Department of Environmental Protection  
Pennsylvania Department of Transportation  
Susquehanna River Basin Commission  
Fort Indiantown Gap Military Reservation

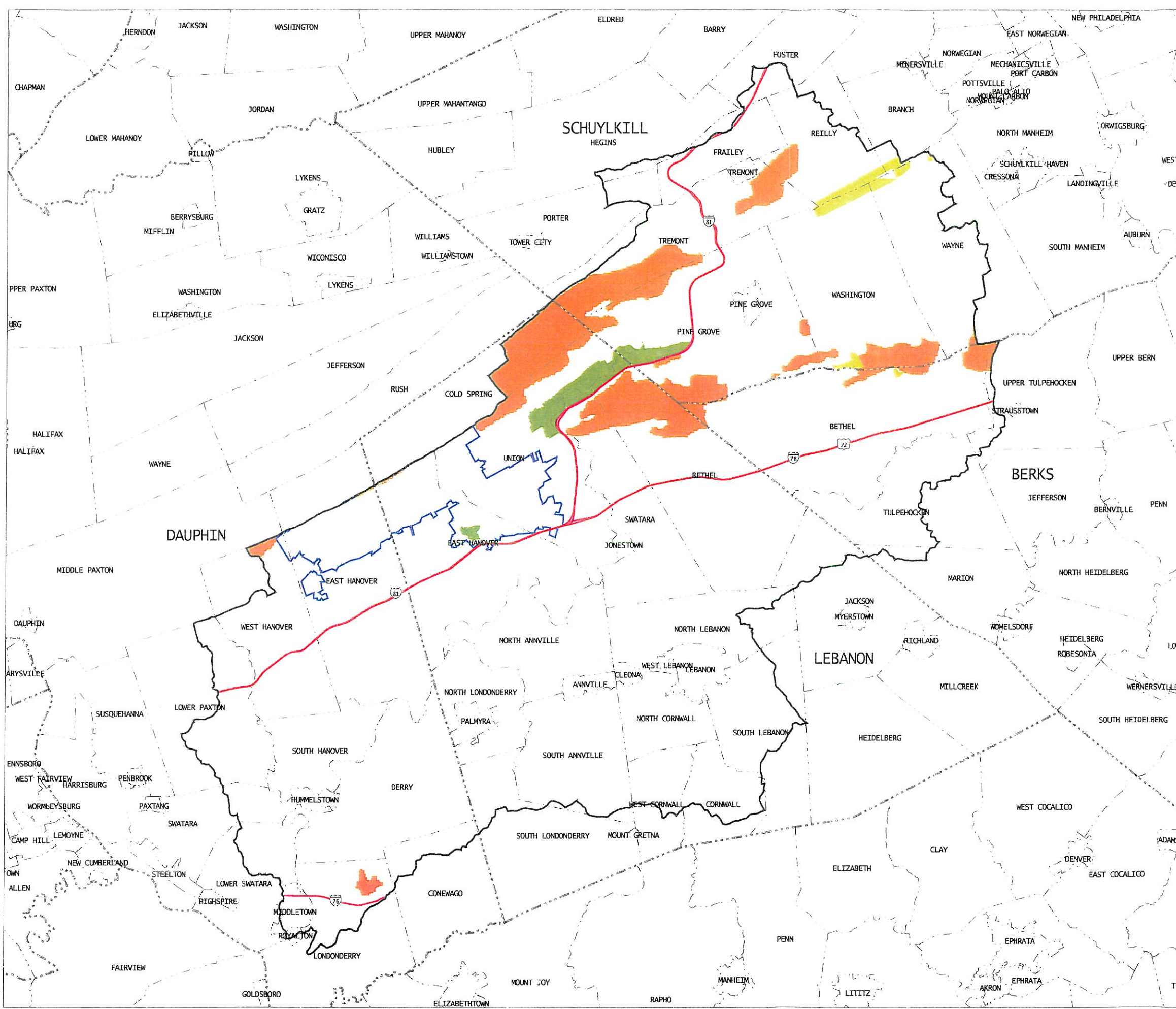



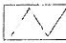

Figure 3-1 --- Public / Private Lands

Figure 4-1

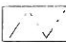


# SWATARA CREEK River Conservation Plan

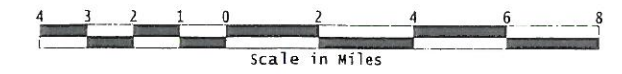
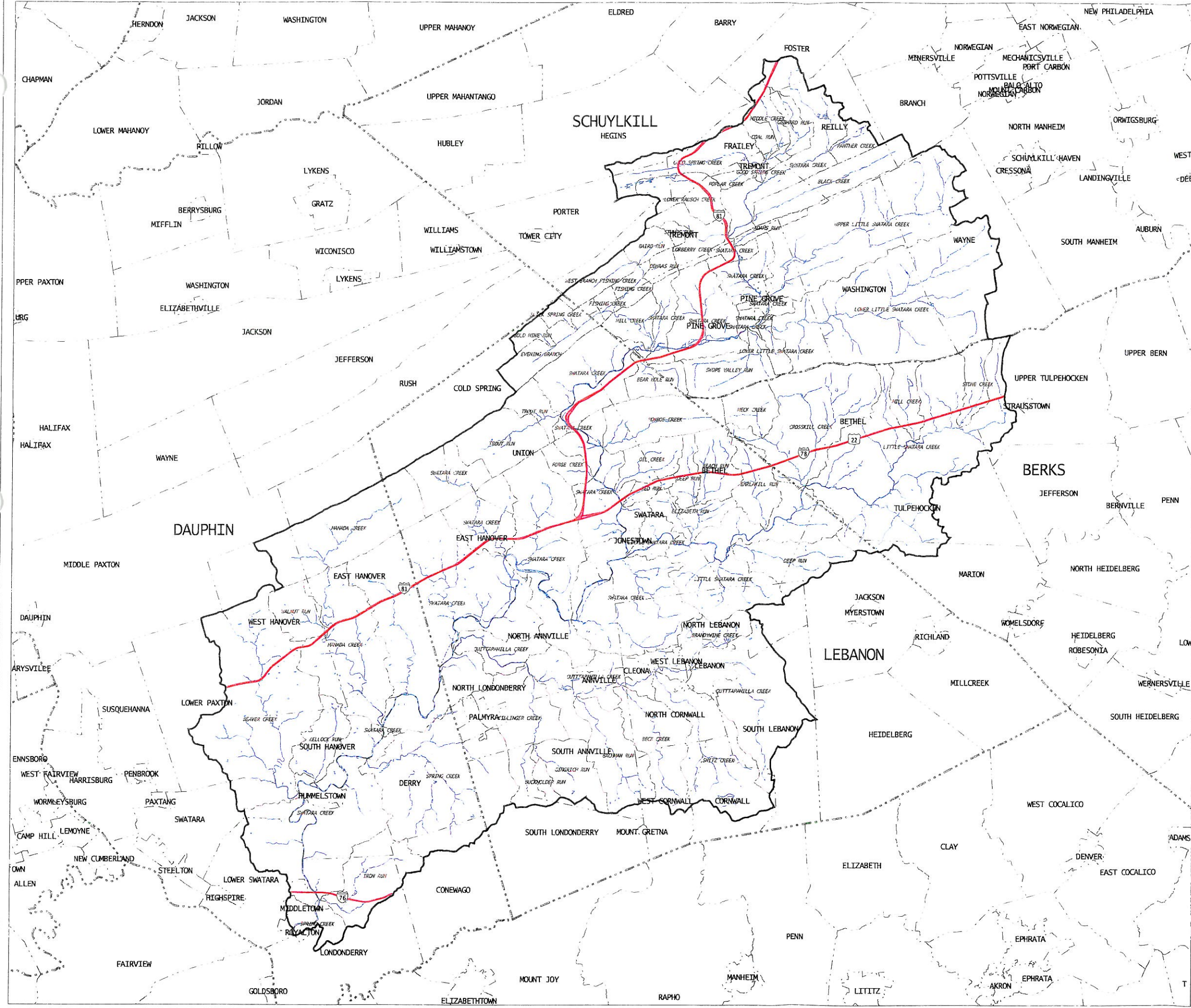
prepared for the  
Swatara Creek Watershed Association  
September, 2000

## Named Tributaries

-  Swatara Creek Watershed
-  Watershed Sub-Basin
-  River / Stream

## Other Features

-  Municipal Boundary
-  County Boundary
-  Interstate Highway



Scale = 1 : 253,440  
1 Inch = 4 Miles (approx.)

### SOURCES:

Pennsylvania Department of Environmental Protection  
 Pennsylvania Department of Transportation  
 Susquehanna River Basin Commission






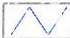
Figure 4-2

# SWATARA CREEK River Conservation Plan

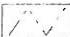
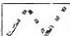

prepared for the  
Swatara Creek Watershed Association

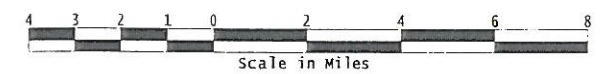
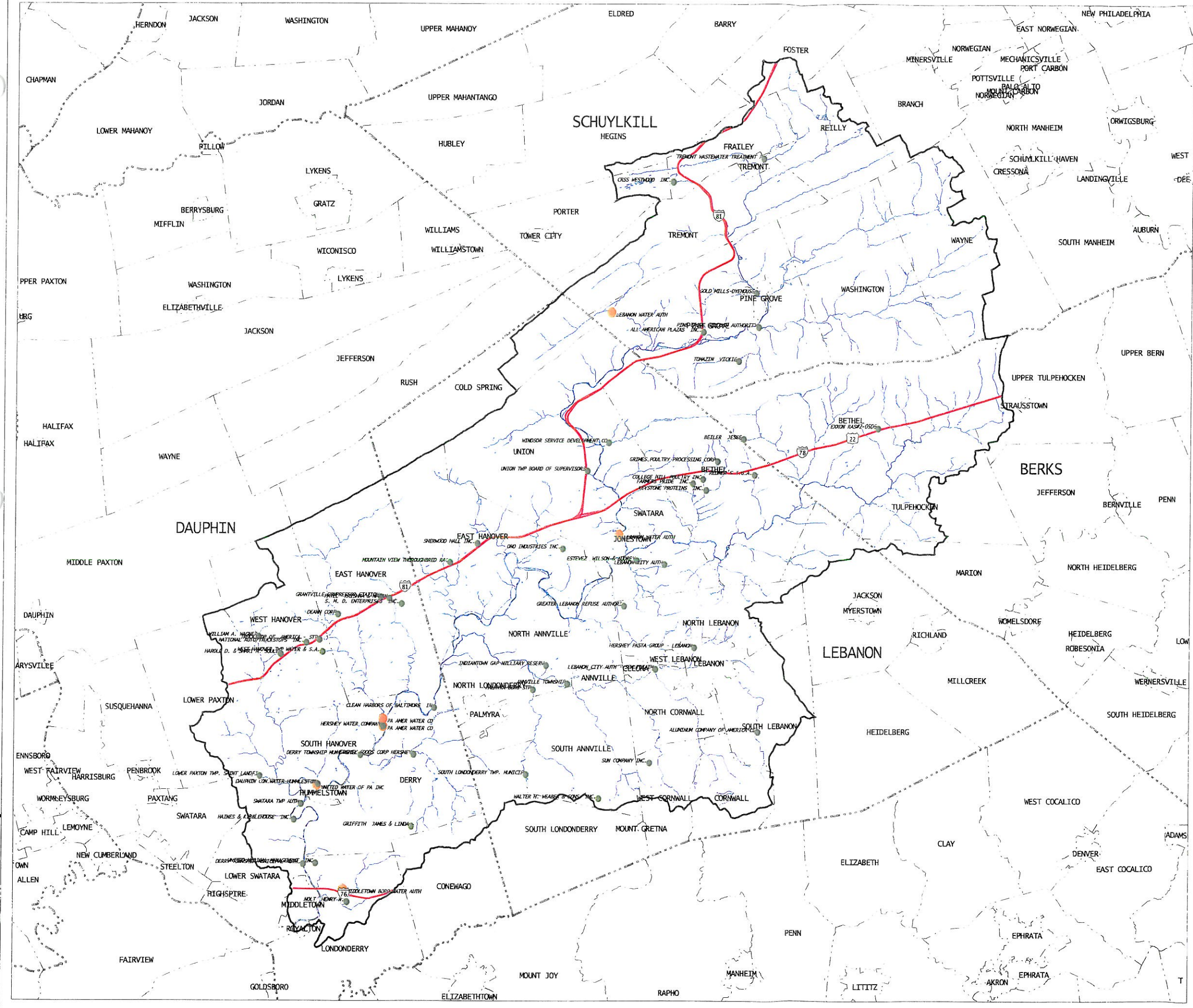
September, 2000

## Surface Water Sources and Discharge Points

-  Surface Water Source
-  Water Discharge Point
-  Swatara Creek Watershed
-  River / Stream

## Other Features

-  Municipal Boundary
-  County Boundary
-  Interstate Highway



Scale in Miles  
 Scale = 1 : 253,440  
 1 Inch = 4 Miles (approx.)

SOURCES:  
 Pennsylvania Department of Environmental Protection  
 Pennsylvania Department of Transportation  
 Susquehanna River Basin Commission



Figure 4-2 -- Surface Water Sources & Discharge Points

Figure 5-1



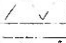

# SWATARA CREEK River Conservation Plan

prepared for the  
Swatara Creek Watershed Association  
September, 2000

## Biological Features

-  PA Game Commission Forest Cooperative Area
-  PA Game Commission Farm Cooperative Area
-  Natural Heritage Inventory Area
-  Important Bird Area

## Other Features

-  Swatara Creek Watershed
-  Interstate Highway
-  Municipal Boundary
-  County Boundary



Scale = 1 : 253,440  
1 Inch = 4 Miles (approx.)

### SOURCES:

- National Audubon Society
- Pennsylvania Game Commission
- Pennsylvania Department of Transportation
- Susquehanna River Basin Commission
- Berks County Natural Heritage Inventory
- Dauphin County Natural Heritage Inventory

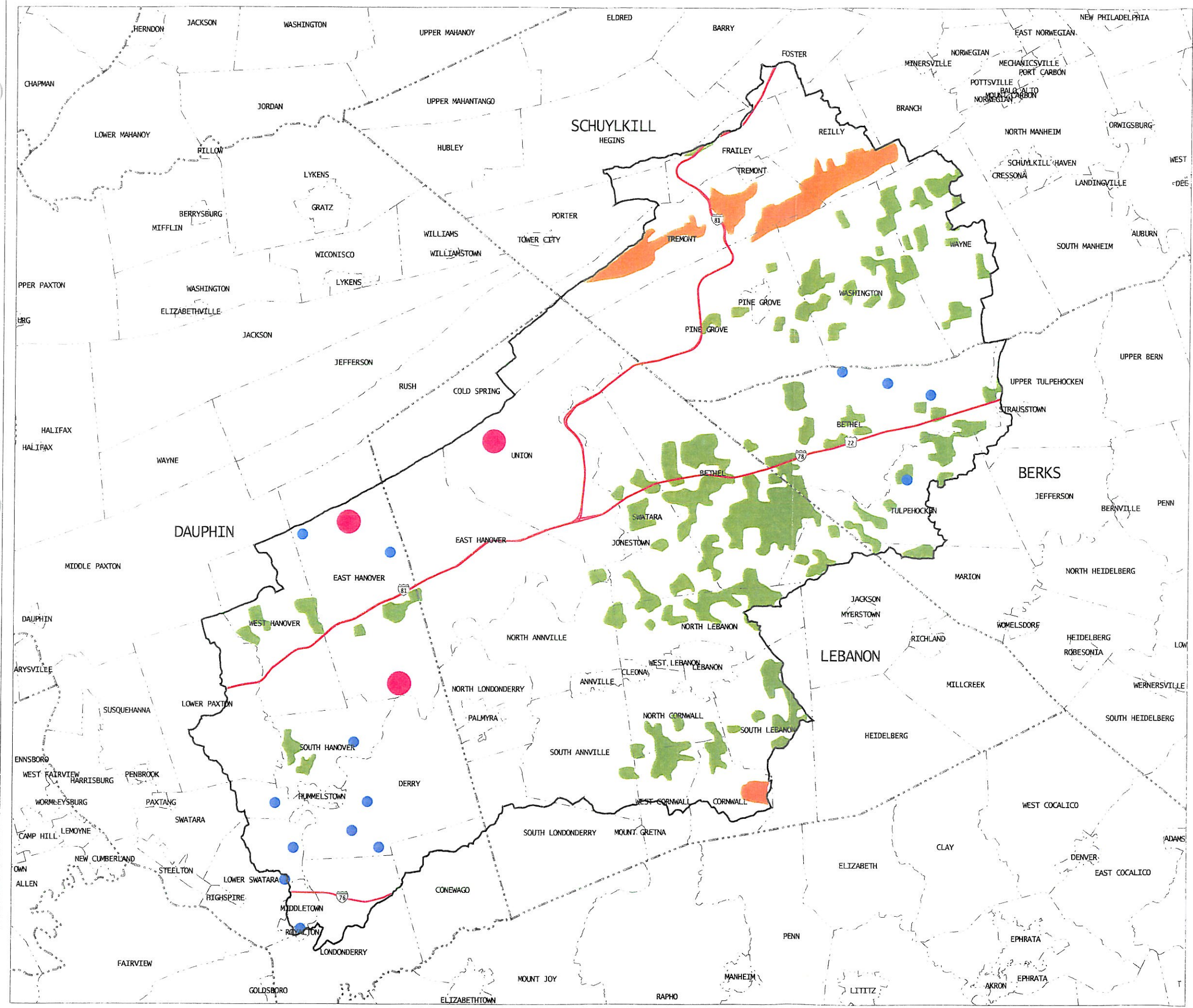


Figure 5-1 -- BioTo